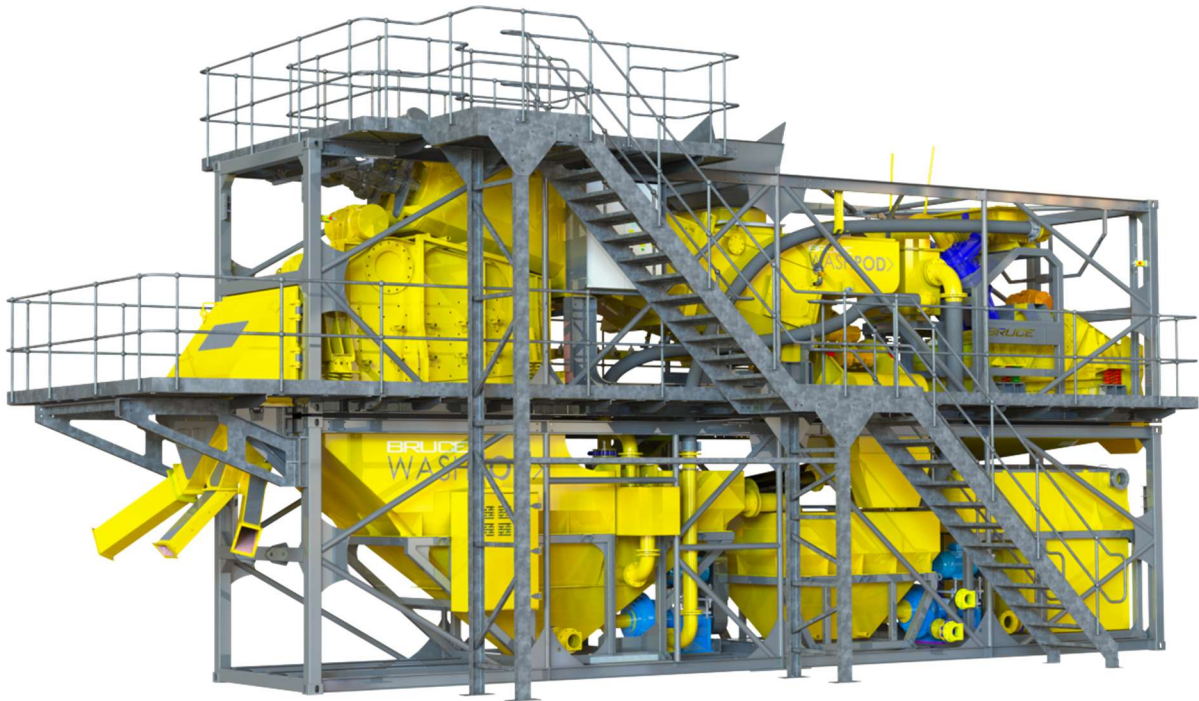


BW-POD WASHPOD - SPECIFICATION



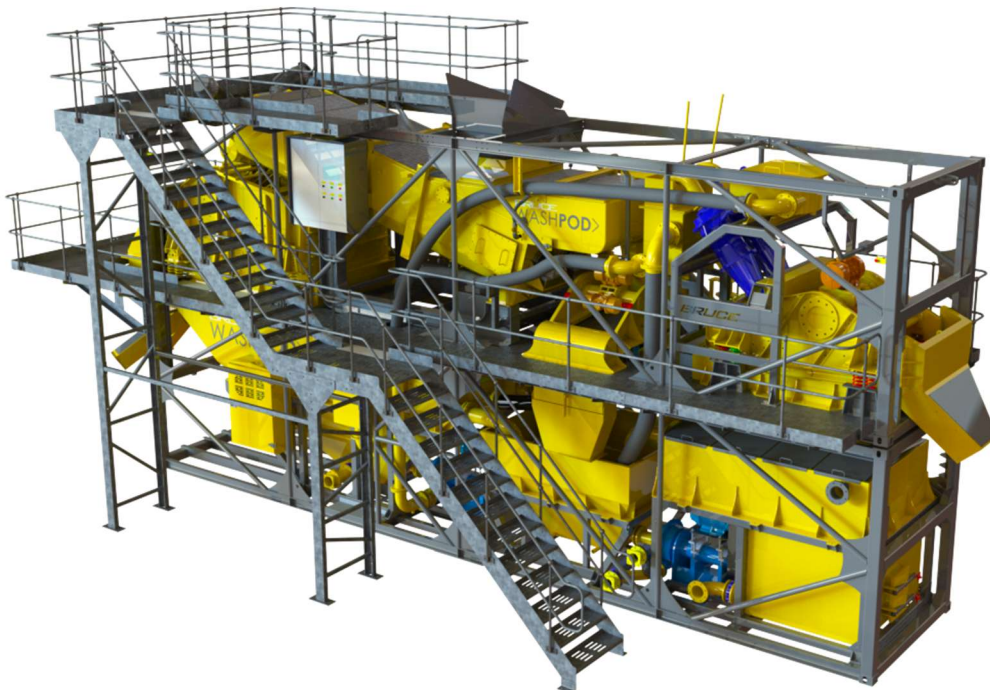
The **BRUCE WASHPOD** is a fully containerised modular washing system. The modular components allow for a fast and easy set-up and the self-contained design allows for site relocation with minimal downtime.

BW-POD COMPONENTS:

- ✓ BWTL-C Twin Logwasher
- ✓ Trash Screen
- ✓ Washing Screen (Single/ Double/ Triple Deck Options Available)
- ✓ BWS - Bruce Sand Plant featuring Dewatering screen, Cyclone & Pump
- ✓ Clean Water Tank
- ✓ Dirty Water Tank
- ✓ Sand Tank
- ✓ On-Board Pumps
- ✓ Stockpile Conveyors

BW-POD - FEATURES & BENEFITS

- › Quick set-up time using **container twist-lock system** to mount and demount
- › **Fully mounted Washing Plant** consisting of Twin Shaft Logwasher, Washing Screen, Trash (Filter) Screen, Twin Cyclone Sand Plant, Sumps, Pumps, and Control Panel
- › Containerised Wash Plant with **minimal footprint** - based on standard ISO Frame, 40ft Hi-Cube container dimensions
- › Compact unique design - **easily transportable** from site to site
- › Complete with **fully automated control panel** for connection direct to generator or wired to full system control panel
- › **Self-regulating** sumps
- › Up to 3 washed aggregates and 1 washed sand
- › Scrubbing, rinsing, screening, sizing and sand washing all contained in a single **modular system**
- › Consistently **dewatered sand output** (typical) moisture content less than 14%
- › Excellent maintenance access with galvanised platforms and access steps



BW-POD - TECHNICAL INFORMATION (STANDARD MACHINE)

Working Length:	16m
Working Height:	7m
Working Width (With Walkway & Steps):	5.5m
Working Width (Without Walkway):	2.6m
Feed Height:	6m
Discharge Height (Aggregates):	1.4m
Discharge Height (Sand):	1.5m
Weight (Top):	22 T
Weight (Bottom):	14 T
Power Requirement:	131.1 kW
Flow Rate:	180m ³ / hr
Transport Dimensions and Mass (Upper Module):	L=12.188 m; B=2.438 m; H=2.895 m; 22 t
Transport Dimensions and Mass (Lower Module):	L=12.188 m; B=2.438 m; H=2.895 m; 14 t



BW-POD - TOP CONTAINER WASH UNIT

BWTL - C BRUCE COMPACT TWIN SHAFT LOGWASHER

Working Dimensions: \perp 7.2m (Overall) W 1.65 (Bath) H 3.2m (Overall)

Construction: 8mm S275

Bath Length: 5.2m

Incline: 15°

Shaft Length: 4.7m each. Synchronized Counter-rotating shafts. Single piece configuration

Paddles & Flights: Interchangeable 25mm HARDOX

Each Shaft: 50 Paddles / 2 Flights (16 Segments)

Outside Diameter: 800 \varnothing Inc Flights & Paddles

Drives: 2 x 22kw / Planetary Gearboxes / 2 x 1:1 Gear / VSD

Drives and Bearings: Mounted externally

Cover: Polyurethane re-grid

Maintenance & Access: Working platform with handrail. Side access sealed door. Drop hatch for easy emptying

Water Discharge: Sockets at rear and side door

Spray Bars: 8No. 1" spray pipes with individual valves

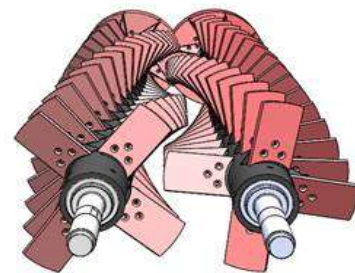
Water Feed: Controlled input valve

Manifold: 4" flanged

TPH: 80 - 100

Feed Size: 0 – 80mm

Flow Rate: 70 - 80m³/hr



BW-POD - TOP CONTAINER WASH UNIT

TRASH (FILTER) SCREEN

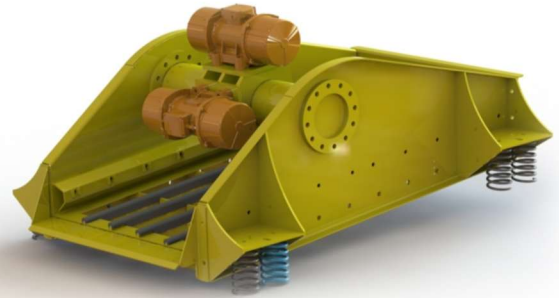
No. of Decks: Single Deck

Screening Area: 1840mm x 915mm (6' x 3')

Screen Media: Polyurethane with 2mm apertures

Vibrating Motors: 2No. 1.1kW

Pitch: 5°



WASHING SCREEN

No. of Decks: Single, double, and triple deck options available

Screen Size: 3000mm x 1500mm (10' x 5')

Screening Area Per Deck: 4.5m²

Pitch: 5° decline

Mounts: Mounted on compression springs

Screen Media: Rubber mats provided as standard. Other media available upon request.

Tension: Side tensioned as standard

Chutes: Hinged Chute for ease of maintenance and media replacement

Water Feed: Water intake manifold

Spray Bars: Spray bars independent from screen. 3No. spray bars top deck. 5No. middle and bottom decks. "Vari Spray" nozzles.

Discharge Chutes: Hardox lined discharge chutes

Discharge Tray: Hardox lined

Power: 2No. 7.6kW vibratory motors

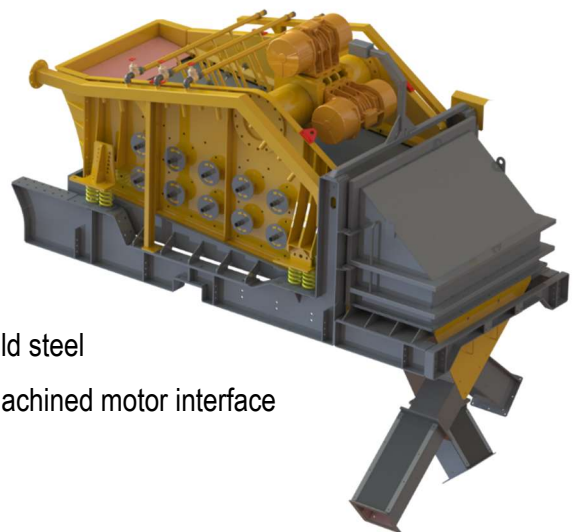
Feed Tray: Hardox lined

Sump: Rubber lined

Base: Skid mounted base

Construction: Fabricated folded construction in 8mm mild steel

Motor Base: Heavy duty pipe construction with 25mm machined motor interface



BW-POD - TOP CONTAINER WASH UNIT

CYCLONES

Cyclone Type & Size: 2No. 15" (375mm) rubber lined Linatex G4 cyclones

Accessories: Abrasion resistant mining grade transfer hose (pump to cyclones). Pressure gauge

Combined Cyclone Flow Rate: 200m³/ hr

DEWATERING SCREEN

No. of Decks: Single deck

Size: 2438mm x 1220mm (8' x 4')

Screening Area: 2.98m²

Media: Polyurethane modules. Standard aperture 17mm x 0.5mm (other apertures available on request)

Power: 2No. 3.6kW motors

Pitch: 3° incline

Mounts: Mounted on compression springs

Side wall protection: Polyurethane



BW-POD - LOWER CONTAINER WASH UNIT

SAND TANK & PUMP

Capacity: 9.2m³

Manufactured from: Steel frame

Drain Connection: 2No. DN 50

Emergency Overflow: 1No. DN 150 with shut-off valve

Pump: 1No. MK 111 R Linapump 6/5 with
1No. 22kW motor (Sand Tank pump)

Pump Flow Rate: 180 - 220m³/hr

Quantity of Solids: 35tph (depending on contamination)

CLEAN WATER TANK

Capacity: 7.3m³

Pump: Calpeda 5/4 Direct Drive 18.5kW

DIRTY WATER TANK

Capacity: 6.5m³

Pump: Linapump 6/5 Centrifugal Pump 22kW

ACCESS STEPS, PLATFORMS & MAINTENANCE PLATFORMS

Design: Galvanised steel frame

Access Steps: 1000mm wide

Walkways: 800mm wide

Safety: Handrails and guards around parameters and voids

Maintenance: Full maintenance access with multi-level walkways

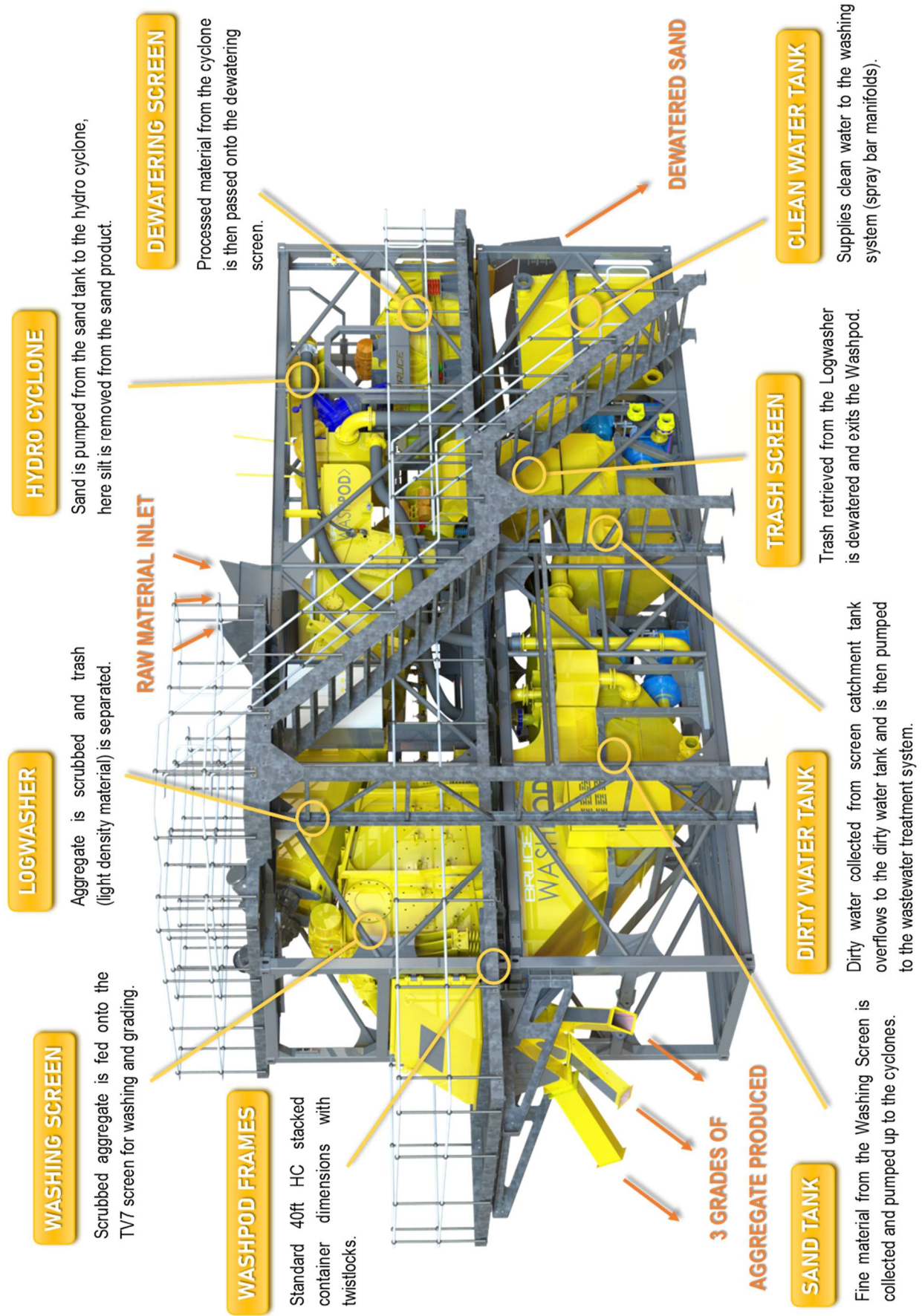
STOCKPILE CONVEYORS

4No - Stockpile conveyors (detached radial, detached static or integrated static c/w height adjustment)

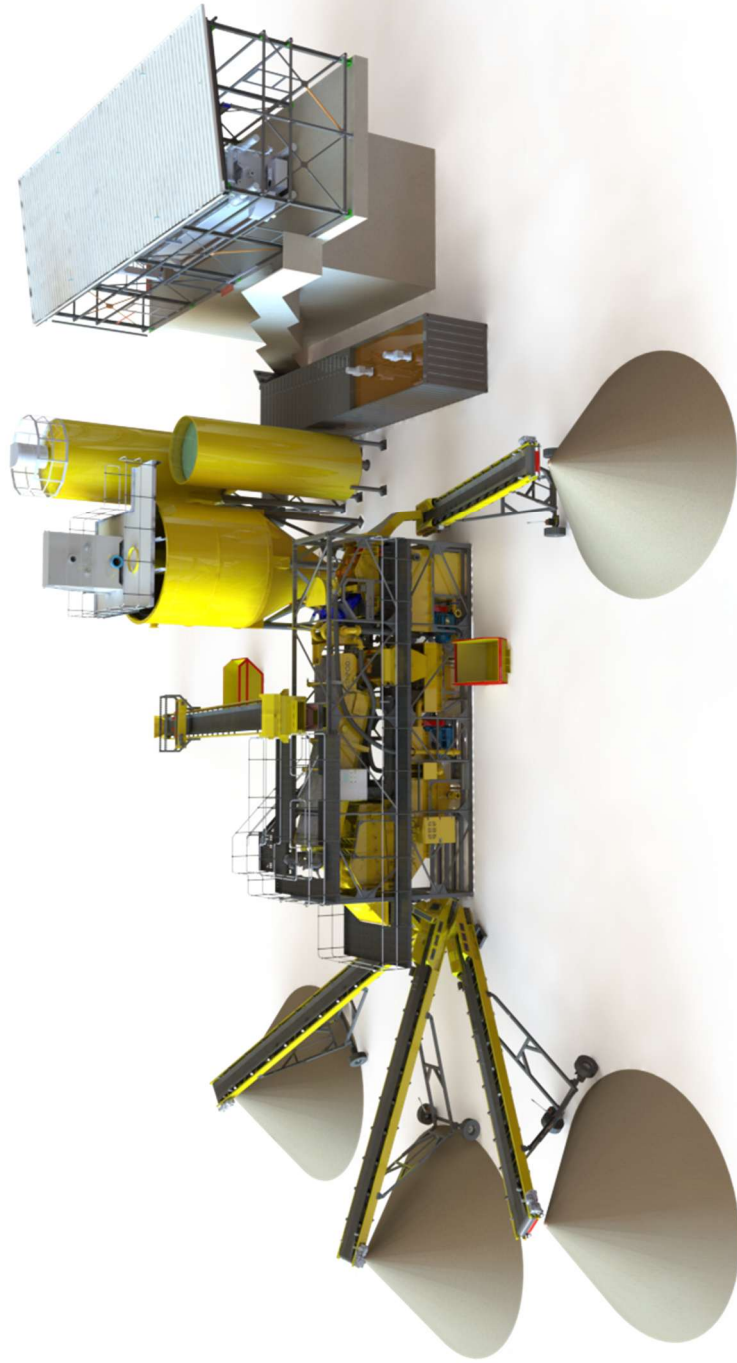
OPTIONAL EXTRAS

- › Feed Hopper with optional Hydraulic Tipping Grid
- › Scalper
- › In-feed Transfer Conveyor (lattice or folded side construction)
- › Wastewater Treatment

BW-POD - INFOGRAPHIC



BW-POD – TYPICAL WASH PLANT LAYOUT



BW-POD - DRAWINGS

