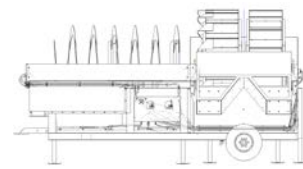


# *SPECIFICATIONS*



## *McCloskey* *BW15*

**DESCRIPTION**

Heavy Duty Bucket Wheel Sand Dewatering:

- 2.6m Diameter Bucket Wheel
- 2.66m Length Spiral
- High Capacity
- Efficient Production
- Low Power & Running Cost
- Containerized Transport

**DIMENSIONS AND WEIGHTS**

Length – Working	6.2m (20' - 4")
Width – Working	4.3m (14' - 1")
Height – Working	3.25m (10' - 8")
Weight	15,000kg (33,070lbs.) Estimated

**CAPACITIES**

Hydraulic Tank Capacity	225L (59gal US)
-------------------------	-----------------

**BUCKET WHEEL**

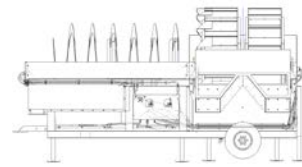
Bucket Wheel Diameter	2600mm (8' - 6")
Bucket Overall Open Width	1380mm (4' - 6")
Number of Buckets	36
Gearbox	Brevini CTU3300
Max Torque	35000Nm
Ratio	130:1
Motor	Danfoss / Eaton OMR 160
Speed	0 to 3.5rpm Adjustable

**SCREW**

Screw Diameter	2100mm (6' - 11")
Screw Length	2660mm (8' - 9")
Gearbox	Brevini ED2046
Ratio	25:1
Motor	Danfoss / Eaton OMSS 250
Speed	0 to 11rpm Adjustable

**WEIR SYSTEM**

Height Adjustable	YES
Total Weir Length	40m (131' - 2")
Water Exits	3 Off Selectable
Flange Connection	10" DN250 PN10



### *ELECTRICS*

Emergency Stops	1 Off Control Panel Door
Cabling	TBC
Start Siren	TBC
Shutdowns	TBC

### *HYDRAULICS*

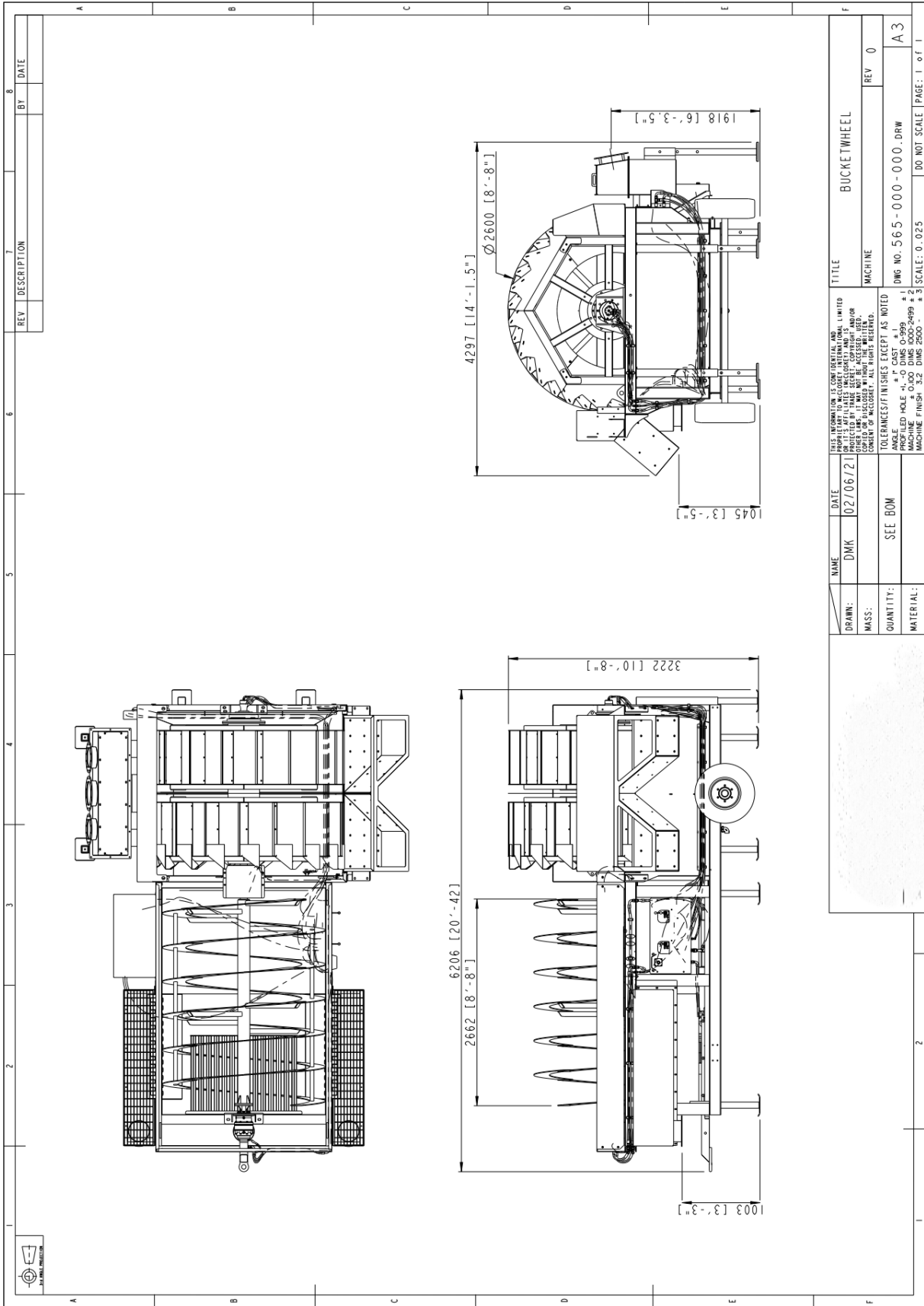
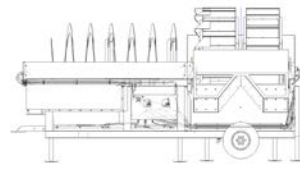
Electric Motor	11kW (15hp)
Pump	GP3 55CC
Total System Flow	72.6lpm (19.18gpm US)
Hydraulic Tank Capacity	246L (65gal US)
Hydraulic Oil Cooler	YES

### *OPTIONS*

- Electric Hydraulic Powerpack
- Tow Bar
- Wheel Axle
- 1 Sand or 2 Sand

### *SAFETY FEATURES*

- External Grease Points
- Safety Shutdown Systems



REV	DESCRIPTION	BY	DATE

NAME	DMK	DATE	02/06/21	TITLE	BUCKET WHEEL
DRAWN:					
MASS:				MACHINE	
QUANTITY:	SEE BOM				REV 0
MATERIAL:					A3
<small>THIS INFORMATION IS CONFIDENTIAL AND NOT BE LOANED, REPRODUCED, COPIED, OR DISCLOSED IN ANY MANNER WITHOUT THE WRITTEN PERMISSION OF MCCLOSKEY INTERNATIONAL LIMITED. PROTECTED BY TRADE SECRET, COPYRIGHT, AND/OR PATENT RIGHTS. ALL DIMENSIONS ARE IN UNLESS OTHERWISE SPECIFIED.</small>				<small>DMG NO. 565-000-000.DWG SCALE: 0.025</small>	
<small>TOLERANCES/FINISHES EXCEPT AS NOTED: ANGLES: 1:1 PROFILED HOLE: ±0.000 MACHINE FINISH: ±0.000 CAST: ±0.000 MACHINING: ±0.000</small>				<small>DO NOT SCALE PAGE: 1 of 1</small>	